

SOUTH-EAST EUROPE TRANSPORT OBSERVATORY


## The Core Network Revision Overview

20<sup>th</sup> Steering Committee Meeting  
03 March 2009, Brussels

Mr. Nenad Nikolic Transport Planning Manager  
Mrs. Mirjana Bugarinovic Railway Expert

---

---

---



---

---

---

---

---


SOUTH-EAST EUROPE TRANSPORT OBSERVATORY


## Content

- Overview of the current Core Network
- Overview of Participants Proposals

---

---

---



---

---

---

---

---


SOUTH-EAST EUROPE TRANSPORT OBSERVATORY


## The Core Road Network

- Core Road Network – modification Category 1 and 2 (update 2009).
- Corridors – international traffic, bypass major urban centers and interconnections with other transport modes; only few sections should be improved.
- Routes – serves to connect landlocked and peripheral parts of the region; some sections should be improved; Route 5 is not connected with TEN-T.

---

---

---

---

---

---

---

---



## The Core Rail Network

- Core Rail Network – modification Category 1
- Corridors – conventional lines which permits interconnections with other transport modes and link with regional networks; some sections should be improved; Corridor VIII connection with TEN-T missing.
- Routes – conventional lines which permits interconnection with other transport modes; a lot of sections should be improved; Route 4 connection with TEN-T missing.

---

---

---

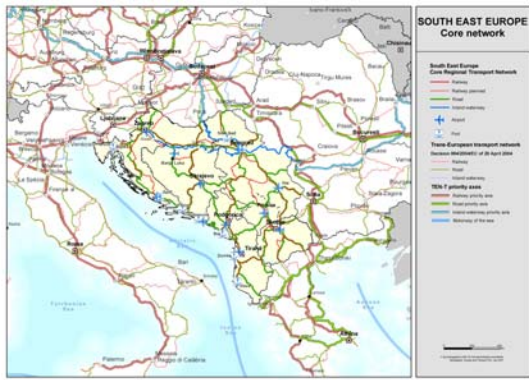
---

---

---

---

---




---

---

---

---

---

---

---

---



## Participants Proposals - Road

- Road Tirane – Blate (NRD\_009)
- Road Thumane – Rrogozhine (NRD\_010)
- Road Fushe Kruje – Tepelene (NRD\_011)
- Road Jajce – Croatian border (NRD\_001)
- Road Jajce – Livno – Croatian border (NRD\_002)

---

---

---

---

---

---

---

---




### Participants Proposals - Road

- Road Veles – Bulgarian border(NRD\_003)
- Road Podmolje – Bitola (NRD\_004)
- New alignment Route 1 (NRD\_005)
- New alignment Route 4 (highway Bar – Boljare) (NRD\_006)
- Road Cacak – Krajevo- Krusevac – Pojate (NRD\_007)
- Road Pristina – Pec – Montenegrin border (NRD\_008)

---

---

---

---

---

---

---

---




---

---

---

---

---

---

---

---




### Participants Proposals - Rail

- Railway line Tuzla - Brcko (NRW\_001)
- Railway line Doboj –Tuzla - Zvornik (NRW\_002)
- Railway line Banja Luka – Novi Grad (NRW\_003)
- Railway line Capljina–Trebinje–Montenegrin border(NRW\_004)
- Railway line Capljina – Imotski – Croatian border (NRW\_005)
- Railway line Zadar –Knin (NRW\_006)

---

---

---

---

---

---

---

---




---

---

---

---

---

---

---

---

- Participants Proposals –  
IWW/Sea Ports and Airports**
- Port of Brcko (NIWWP\_001)
  - Port of Samac (NIWWP\_002)
  - Port of Vukovar (NIWWP\_003)
  - Port of Zadar (NSP\_001)
  - Ohrid Airport (NAP\_001)

---

---

---

---

---

---

---

---




---

---

---

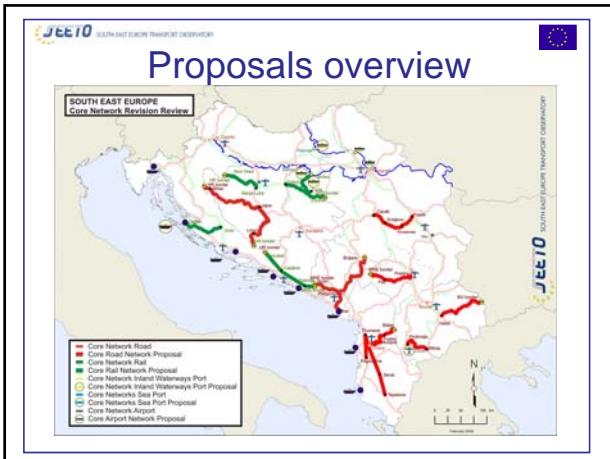
---

---

---

---

---




---



---



---



---



---



---



---



---

Thank you for your attention !

**SEETO Team**

---



---



---



---



---



---



---



---