

**PANEUROPEAN CORRIDOR no. X**  
**Project Ljubljana-Istanbul/Halkali "25"**  
**Bosphorus Europe Express**

A Business Advisory Council for Southeast Europe

Container Train  
Ljubljana/Moste-Istanbul/Halkali

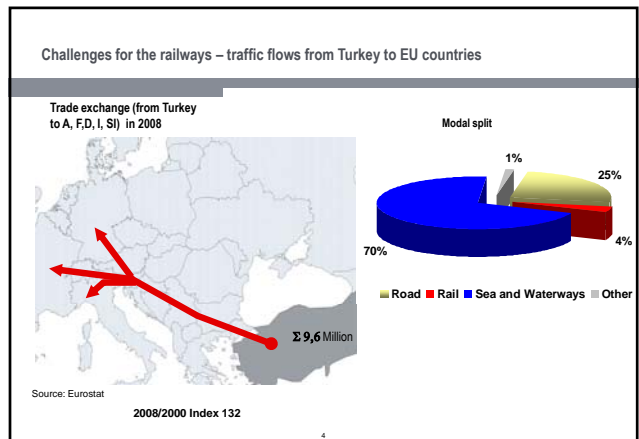
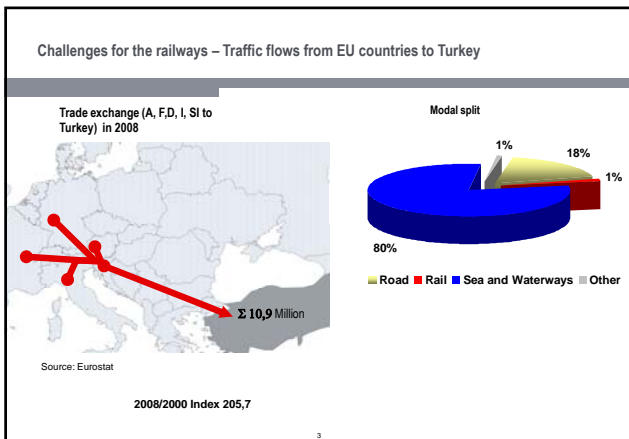
4th SEETO Workshop, Bečići, 24 September 2009, Mirjam Kastelic, Slovenian Railways

Container train "Bosphorus Europe Express"

Best linkage between Germany, Slovenia and Turkey!

Product of operators:  
 • Adria Kombi and others k. d.  
 • Kombiverkehr

On the market since April 2008.



Project Ljubljana – Istanbul/Halkali "25"  
 Utilizing the growth opportunities throughout the corridor and shifting of the traffic to the rail

Governed by the Business Advisory Council for the South Eastern Europe

**Goals**

- Shorter travel time between the origin and destination of goods.
- Improvement of the service quality.
- Competitiveness of rail transport compared to alternative transport modes.
- Increased transport volume.

**Tasks**

- Developing common production management.
- Harmonization of different traffic regulations for international trains.
- Developing common IT solutions for production.

**Advantages**

- Automatic tracking & tracing.
- Top quality and security standards.
- Borderless tracking of consignments.
- Rail and private owned wagons usage.
- Opening of new markets due to lower pricing and reduced travel time.

Bosphorus Europe Express on Pan-european Corridor X

**Description of the route**

- total length: 1577 km (out of it 260 km of non-electrified railway lines, 200 km of single tracks, on some sections gradients up to 29‰)
- crossing 5 countries
- 4 (x 2) border-crossings, EU and non-EU borders
- different power supply systems
- 8 times changing the locomotives
- different max train length (520 – 570 m) and weight (1200-1800 tonnes)

Legend:  
 ■ 3 kV DC  
 ■ 25 kV/50 Hz  
 ● diesel

Test run on 16/17 March 2009 to achieve the reduced travel time

- Creative cooperation and a joint will of IMs, RUs and the BC state authorities that participated in the project
- A priority along the entire route (as being a non-regular train)
- Multi-system and diesel locos provided by Dispoloc (exception on HŽ network)
- Customs and commercial inspections was carried out at the departure station Ljubljana Moste
- AdriaKombi sent in advance to the responsible - contact persons from the RUs at the BCs along the route: loading list, wagon list, CIM documents (scan), invoices for the goods

at the BCs - activities carried out:

- Dobova (SLO): commercial and technical handover of the train S<sub>2</sub> – HŽ, technical inspection and brake test by HŽ, HŽ loco coupling
- Maršalling yard in Zagreb: import customs clearance
- Tovarnik (CRO): export customs clearance
- Šid (SRB): HŽ loco uncoupling, commercial and technical handover of the train HŽ – ŽS, technical inspection and brake test, import customs clearance
- Niš (SRB): change of locos (diesel in front line)
- Dimitrovgrad (SRB, BG): export/import clearance, change of loco (multi-system in front line), technical inspection and brake test, commercial and technical handover of the train between ŽS – BDŽ
- Plovdiv (BG): change of loco (diesel in front line)
- Svilengrad (BG): export customs clearance, commercial and technical handover of the train
- Kapikule: import customs clearance, technical inspection and brake test
- Istanbul Halkali: handover of commercial documents to TCDD,...

Bosphorus Europe Express  
Stoppage time at the BCs – positive developments

Route Ljubljana Moste – Istanbul Halkali

Station / BC	Timetable 2008 / 2009		Test run 16 / 17 March 2009		Timetable 2009 / 2010	
	Departure once a week; on Sunday	Stoppage time	Departure	Stoppage time	Departure twice a week: Monday, Thursday	Stoppage time
Ljubljana Moste	5:50		8:30		12:39	
Dobova (SLO)		5:37*		0:35		0:47
Zagreb MY (CRO)				0:30		
Tovarnik (CRO)		1:07		0:30		0:30
Šid (SRB)		2:02		1:00		1:02
Dimitrovgrad (SRB)		3:14		2:00		1:56
Dragoman (BG)		0:31		0:10		0:12
Svilengrad (BG)		2:56		0:30		1:05
Kapikule (TR)		4:15		0:42		4:17**
<b>Σ</b>		<b>19:42</b>		<b>6:00</b>		<b>9:49</b>
<b>ΣΣ</b> Travel time	<b>60:43</b>		<b>35:00</b>		<b>45:25</b>	

\* Due to the early departure from Ljubljana-Moste; station is closed on Sunday from 6:00 a.m.  
\*\* Arrival to Kapikule at 0:43

Bosphorus Europe Express  
Time table 2009/2010 Ljubljana Moste – Istanbul Halkali

Arrival	Departure	Day of departure	Station / BC	Pure travel time	Stoppage time	Travel time in total
—	12:39	1,4	Ljubljana Moste (SLO)			0:00:00
14:14	15:01		Dobova (SLO)	1:35:00	0:47:00	1:35:00
15:09	15:09		Savski Marof (CRO)	0:08:00	0:00:00	2:30:00
22:20	22:50		Tovarnik (CRO)	7:11:00	0:38:00	9:41:00
23:00	0:02		Šid (SRB)	0:10:00	1:02:00	10:21:00
11:14	13:10	2,5	Dimitrovgrad (SRB)	11:12:00	1:56:00	22:35:00
14:37 *	14:49		Dragoman (BG)	0:27:00	0:12:00	24:58:00
23:13	0:18	2,3,5,6	Svilengrad (BG)	8:24:00	1:05:00	33:34:00
0:43	5:00		Kapikule (TR)	0:25:00	4:17:00	35:04:00
11:04	—	3,6	Istanbul Halkali (TR)	6:04:00		45:25:00
				<b>35:36:00</b>	<b>9:49:00</b>	<b>45:25:00</b>

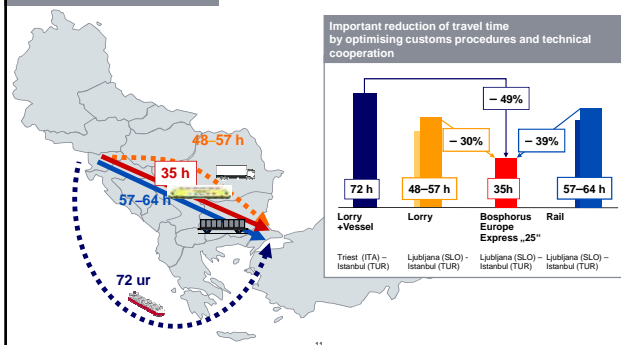
\* Change of time (CE, local time) taken into consideration

Bosphorus Europe Express  
Time table 2009/2010 Istanbul Halkali - Ljubljana Moste

Arrival	Departure	Day of departure	Station / BC	Pure travel time	Stoppage time	Travel time in total
—	17:00	1,4	Istanbul Halkali (TR)			0:00:00
22:49	1:42	1,2,4,5	Kapikule (TR)	5:49:00	2:53:00	5:49:00
2:07	3:44		Svilengrad (BG)	0:25:00	1:37:00	9:07:00
12:26	12:56		Dragoman (BG)	8:42:00	0:38:00	19:26:00
12:25 *	13:55		Dimitrovgrad (SRB)	0:31:00	1:30:00	20:27:00
2:46	4:30	3,6	Šid (SRB)	11:09:00	1:44:00	33:06:00
4:40	5:10		Tovarnik (CRO)	0:10:00	0:30:00	34:60:00
12:24	12:24		Savski Marof (CRO)	7:14:00	0:00:00	42:44:00
12:32	13:00		Dobova (SLO)	0:08:00	0:28:00	43:20:00
14:38	—	3,6	Ljubljana Moste (SLO)	1:38:00		44:58:00
				<b>35:46:00</b>	<b>9:12:00</b>	<b>44:58:00</b>

\* Change of time (CE, local time) taken into consideration

Bosphorus Europe Express  
Achieved with the test run: Travel time reduced by 39% on 17 March 09  
Target: Travel time reduced by 50%



Project Ljubljana – Istanbul/Halkali “25”  
Maintaining the pace and commitment to improve our performance

- The Pace**
- Project team with the support of BAC SEE is continuing its work
  - Timetable 2010 – new reduction of travel time
  - QM Handbook (procedures, regulations, reasons for delays, information flows); service reliability
  - Timetable 2011 – further reduction of journey time (mutual trust inspection system-handover of the trains, speed up the BC procedures, introduction of AGTC principles..)
- The Commitment**
- Achieving the goals of 25 hours travel time until 2014.

Long Term Goals  
Realization of infrastructure improvement projects until 2014 can reduce travel time by 6 hours

Under the assumption that all project will be realized in accordance with plan, the travel time can be reduced by additional 6 hours until 2014.

Slovenia	■ Total reduction: 10 minutes	10 % faster as tested
Croatia	■ Total reduction: 30 minutes	12 % faster as tested
Serbia	■ Total reduction: 240 minutes	36 % faster as tested
Bulgaria	■ Total reduction: 115 minutes	28 % faster as tested
Turkey	■ Total reduction: 10 minutes	5 % faster as tested

Demand towards the politics: permanent financing and realization of infrastructure project will influence the competitiveness of the rail transport!

13

Bosphorus Europe Express - environmental friendly

ENVIRONMENTAL SAVINGS: 25.125 EURO



According to the European Commission calculation model on the external costs - environmental effects:  
**the container train Bosphorus Europe Express has saved in one journey 25.125 EURO in compare to the transport goods by trucks.**

Project Ljubljana – Istanbul/Hakali “25”

Thank you for your attention

15