



SEETO 28° Steering Committee Meeting

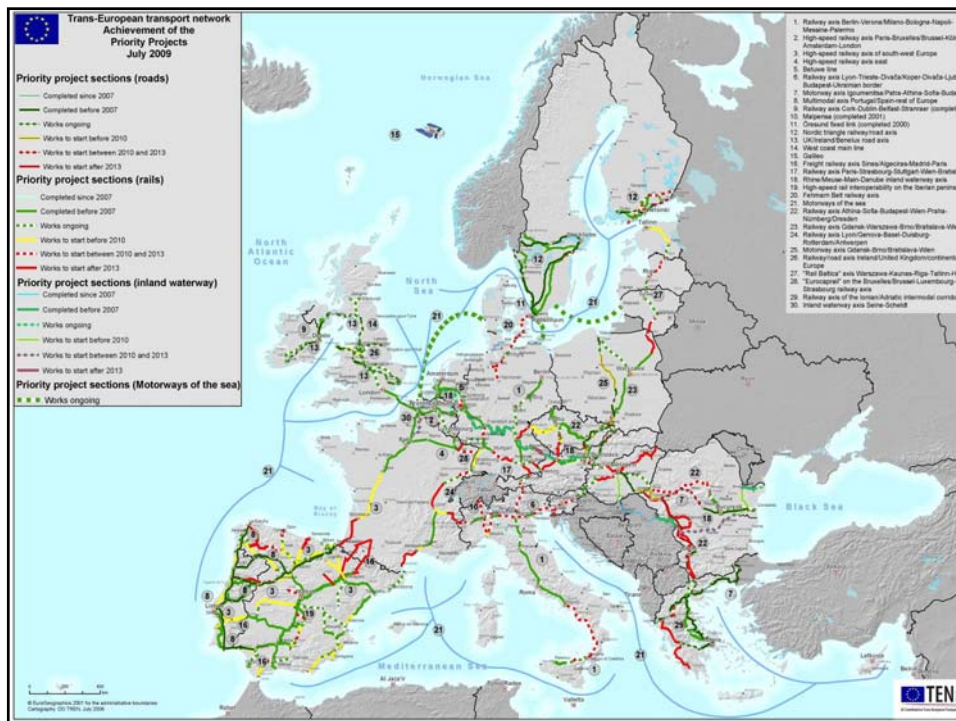
Directorate-General
for Mobility
and Transport



EUROPEAN
COMMISSION

Trans-European Transport Network and the Danube Strategy

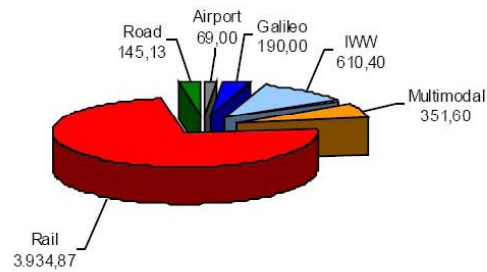
DG MOVE
Cesare Bernabei
Brussels
March 10 2011

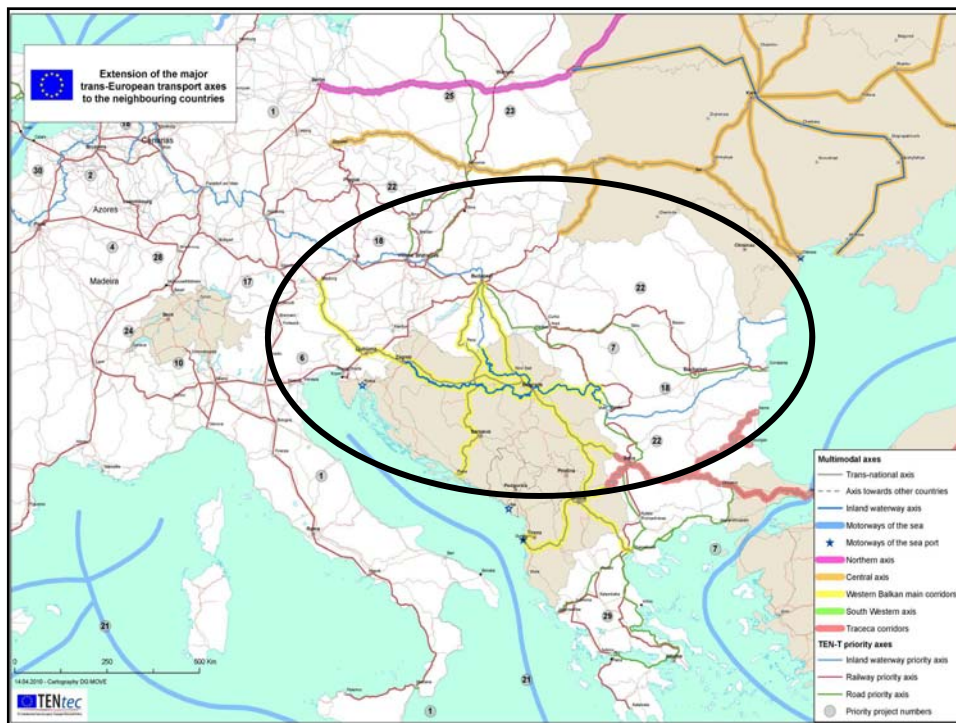
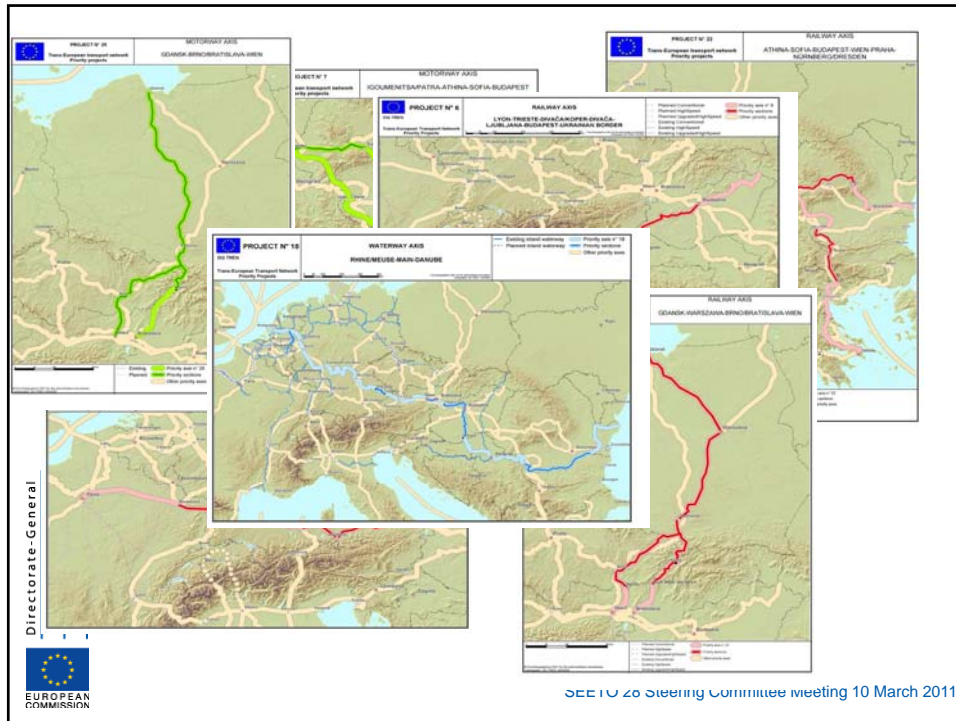


Trans-European Transport Network TEN-T Priority Projects

Budget and share (2007-2013)

- Rail 74.2 %
- IWW 11.5 %
- Multimodal 6.7 %
- Galileo 3.6 %
- Road 2.7 %
- Airport 1.3 %





TEN-T and the Danube Strategy

1a) Macro Strategy for the River Danube Basin

Completion of already identified Priority Projects integrating it with major corridors in Non-EU States, overcoming bottlenecks of all nature:

economical, environmental, political, social

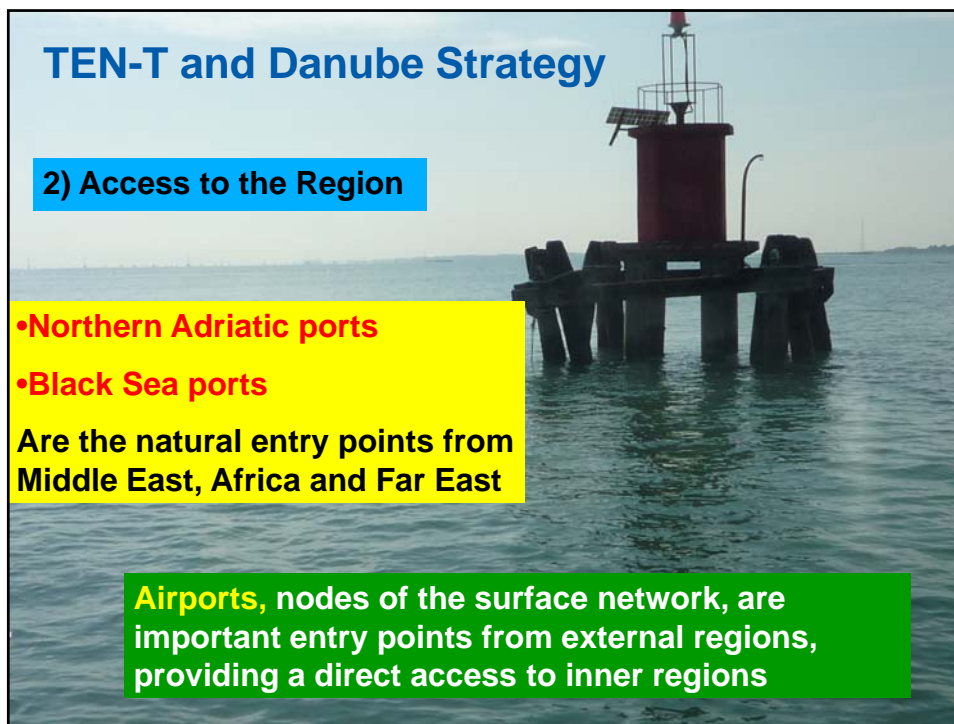
TEN-T and Danube Strategy

1b) Macro Strategy for the River Danube Basin

Economical development and Environment can live and grow together:

the **Joint Statement Principle** for the implementation of river infrastructures, signed by ICPDR, Danube Commission and Sava Commission, is the good example

Early implementation of the Joint Principle are being implemented in Danube river projects in Romania, Hungary and Germany



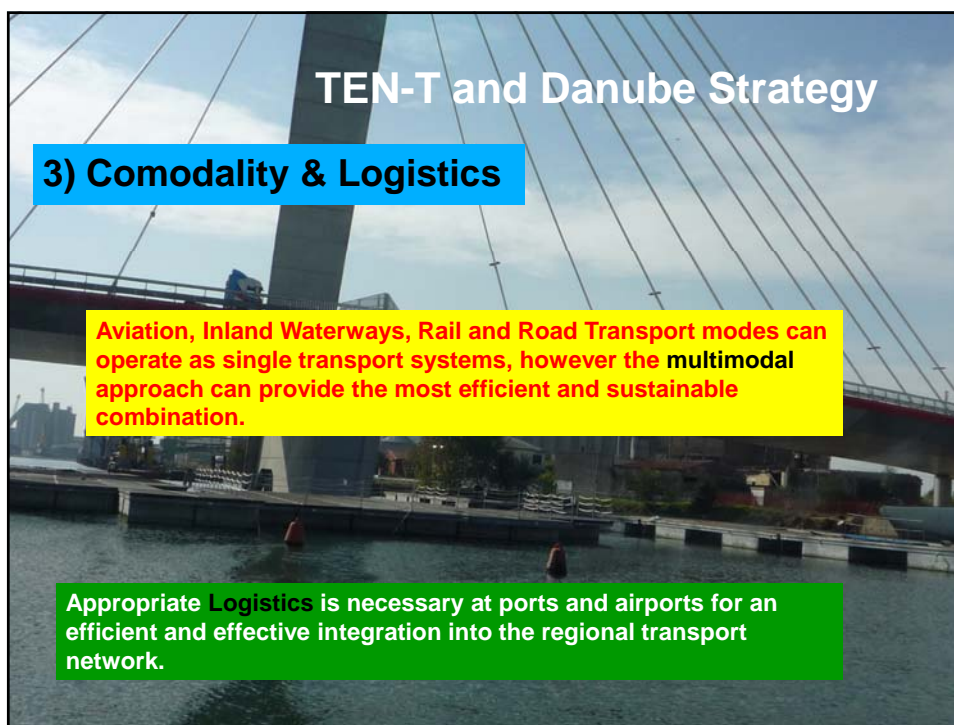
TEN-T and Danube Strategy

2) Access to the Region

- Northern Adriatic ports
- Black Sea ports

Are the natural entry points from Middle East, Africa and Far East

Airports, nodes of the surface network, are important entry points from external regions, providing a direct access to inner regions



TEN-T and Danube Strategy

3) Comodality & Logistics

Aviation, Inland Waterways, Rail and Road Transport modes can operate as single transport systems, however the multimodal approach can provide the most efficient and sustainable combination.

Appropriate **Logistics** is necessary at ports and airports for an efficient and effective integration into the regional transport network.

● Action Plan

Inland Waterways Transport

- To achieve a sustainable navigation on the Danube
- To implement and integrate National Policies
- To remove obstacles
- To modernise Danube fleet
- To develop modern multimodal ports
- To implement PLATINA
- To support Danube Commission
- To develop and implement technology (RIS, engine, fuel)
- To invest in jobs education

● Action Plan

Rail, Road and Air

- To complete TEN-T Priority Projects
- To integrate TEN-T with Corridors in non-EU States
- To remove obstacles
- To build new bridges
- To develop modern multimodal ports
- To coordinate National Policies
- To implement SESAR
- To enhance cooperation between air traffic systems (FAB)
- To develop and implement technology

